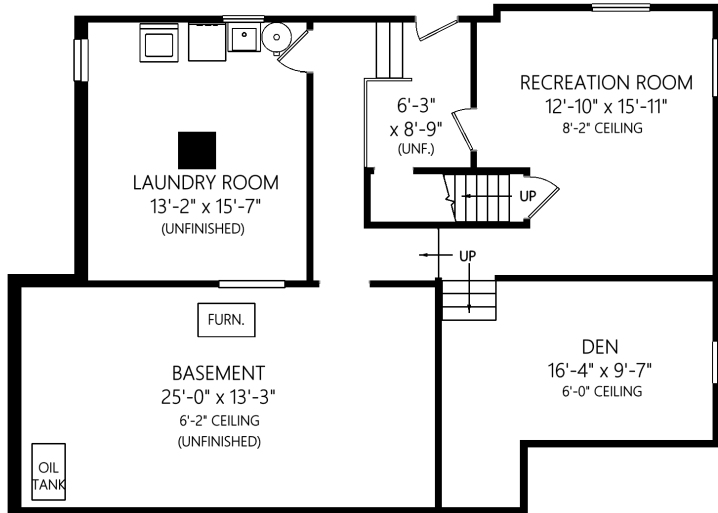


| | Fin. Sq.Ft. | UnFin. Sq.Ft. | Total Sq.Ft. |
|--------------|-------------|---------------|--------------|
| Main Level | 2410 | 0 | 2410 |
| Lower Level | 984 | 990 | 1974 |
| Total | 3394 | 990 | 4384 |

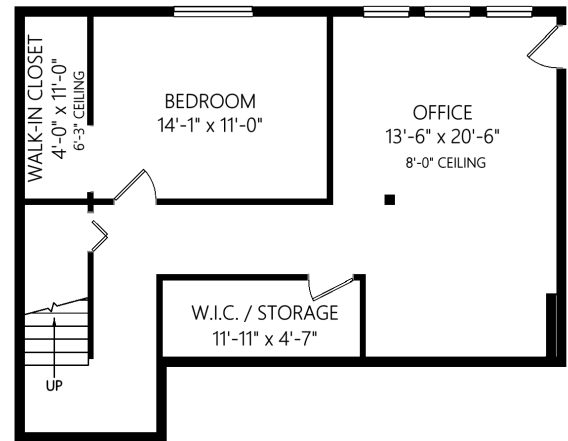
Shown length and width dimensions are approximate. Area sq.ft. is representative of the on-site measurements. (1" accuracy)



Figures, Calculations, and Representations are for indicative and promotional purpose only. VI Standard Real Estate Services Inc. will not be liable for any damages of any kind arising from the mis-use of this information.



LOWER LEVEL
 984 FINISHED SQ.FT.
 990 UNFINISHED SQ.FT.
 + ADDNL. SQ.FT. WHERE NOTED
 AREAS WITH CEILING HEIGHTS BELOW
 6'-7" ARE ALSO CONSIDERED UNFINISHED



| | Fin. Sq.Ft. | UnFin. Sq.Ft. | Total Sq.Ft. |
|--------------|-------------|---------------|--------------|
| Main Level | 2410 | 0 | 2410 |
| Lower Level | 984 | 990 | 1974 |
| Total | 3394 | 990 | 4384 |

Shown length and width dimensions are approximate.
 Area sq.ft. is representative of the on-site measurements. (1" accuracy)



Figures, Calculations, and Representations are for indicative and promotional purpose only.
 VI Standard Real Estate Services Inc. will not be liable for any damages of any kind
 arising from the mis-use of this information.